

SEAL
ABLE

pioneers in profiles

INSTALLATION INSTRUCTION

for Starting Seals M35721 & M35697

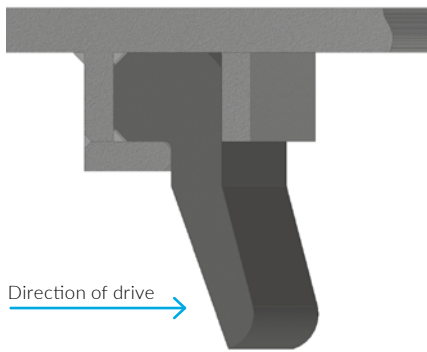
INSTALLATION INSTRUCTION FOR STARTING SEALS M35721 & M35697

NOTE

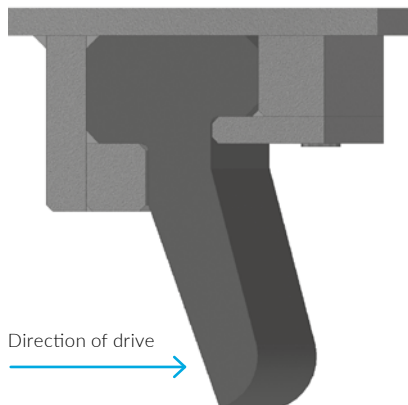
The purpose of these instructions is to show the preparation and implementation of the installation of the Starting Seals M35721 and M35697. The instructions described here are to be understood as an example and may vary depending on project requirements and local conditions.

STARTING SEAL OPTIONS

M35721



M35697



PROCESSING TEMPERATURE

Adhesive, as well as all components must have a minimum temperature > 10 °C. In addition, one must comply with the instructions for Cyberbond glue.

PREPARATION

The Starting Seals should lay flat in a straight and relaxed position before installing and stored for approx. 10 hours at 12 °C preferably more.

The areas where the starting seals are bonded to each other must be clean (as free of dust as possible) and dry.

Assessment of the Starting Seal metal construction, it has to be clean and without offset for the installation. The 12 o'clock position has to be determined.

REQUIRED MATERIALS

Cyberbond adhesive



- ✓ Cutter knife
- ✓ Angle grinder
- ✓ Straight Edge
- ✓ Assembly aid

INSTALLATION INSTRUCTION FOR STARTING SEALS M35721 & M35697

1 | PLACEMENT

Insert the start seal in the metal construction holding rail, beginning and ending at the 12 o'clock position (consider the installation direction). Fixation (without tension) of the start seal.



To determine the final cutting position, the start seal is fully inserted into the metal construction holding rail.

2 | FITTING



Take out the gasket from the holding metal construction rail 5 m before and after the 12 o'clock position to have enough clearance for cutting and the gluing procedure. Fix the seal at the same height as in the holding metal construction rail for better handling.

3 | CUTTING PROFILE



Marking the cutting positions (on both sides) with an additional length of minimum 3 cm (of combined length). Remove the gasket for cutting from the assembly aid. Cut both sides of the profile as straight as possible.



4 | TIGHTEN ASSEMBLY AID

Now put on the assembly aid, aligned with the angle and fix it by tightening all screws. It is important that profile is not able to move in the assembly aid. Properly fasten all screws as shown in the pictures below.



INSTALLATION INSTRUCTION FOR STARTING SEALS M35721 & M35697

SEALABLE

pioneers in profiles

5 | ROUGHEN

After cutting the profile, it is required to roughen up the surface with an angle grinder to ensure a perfectly straight gluing surface for proper bonding connection (with or without assembly aid).



6 | CHECK THE SURFACES



Check that the cutting surfaces are straight and even. Reconnect the assembly aid if you roughened the profile ends without assembly aid and make sure that profiles are not able to move in the assembly aid.



7 | GLUING THE SURFACES

Apply the Cyberbond adhesive evenly on one side of the profile.



INSTALLATION INSTRUCTION FOR STARTING SEALS M35721 & M35697

8 | BONDING THE PROFILES



You can remove the assembly aid after 2 hours. The final bonding strength is reached after 24 hours. Now the start seal is ready to use and can be installed and fixed properly into the metal holding construction holding rail.

After applying the cyberbond, bring the profile ends together by tightening the screws quickly from the bottom up! Tighten the Screws until the adhesive comes out between the gaskets ends. The gluing needs the pressure for best bonding results.





CONTACT

RESEARCH & DEVELOPMENT

Oliver Pasemann
T +49 3622 633 469
M +49 152 5313 2247
oliver.pasemann@seal-able.com

APPLICATION ENGINEER

Mark Fischer
M +49 151 1464 8844
mark.fischer@seal-able.com

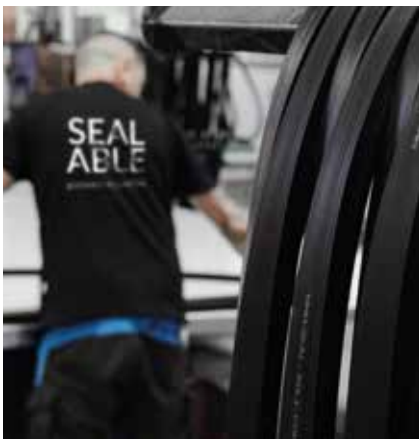


SALES AMERICA, JAPAN

Peter Tiedemann
M +1 732 7636 203
peter.tiedemann@seal-able.com

SALES EUROPE, AFRICA, MIDDLE EAST, INDIA, HONG KONG, AUSTRALIA, NZ

Gilles Mauchamp
M +33 680 388 956
gilles.mauchamp@seal-able.com



SEALABLE Solutions GmbH

Eisenacher Landstr. 70
99880 Waltershausen
Germany
info@seal-able.com
www.seal-able.com